

# NATURAL RESOURCES

## CLEANING GUIDE



### Increase Your Productivity

By knowing exactly which products to use in specific areas, you can get the job done faster and more efficiently.

### Keep Your Customers Happy

A clean establishment is a big part of employee and customer satisfaction. Make sure your cleaning tasks aren't forgotten.

### Explore the Multitude of Uses

Our products can be used for various applications that might not have been previously considered. See what they can do for your particular setting.

# Site Survey

## First Analysis



### BASIC INFORMATION

Primary Contact:

Phone:

Email:

Facility Address:

Company Name:

☐ Single Site

☐ Multiple Sites

### FACILITY INFORMATION

Client's Challenges:

Client's Desired Outcome:

Client's Priorities:

☐ General Cleaning

☐ Disinfection

☐ Degreasing

☐ Odour Control

☐ Carpets

☐ Floors

☐ Washrooms

☐ Glass/Windows

☐ Green Footprint

☐ Ready-to-Use

☐ Concentrated/Proportioning System

☐ Other: \_\_\_\_\_

Type: ☐ Commercial

☐ Industrial

☐ Educational

☐ Healthcare

☐ Other: \_\_\_\_\_

Total Number of Employees: \_\_\_\_\_

Estimated Daily Visitors: \_\_\_\_\_

Largest Surface Area: \_\_\_\_\_

Smallest Surface Area: \_\_\_\_\_

Total Surface Area: \_\_\_\_\_

### CURRENT PURCHASING PRACTICES

Maintenance done by: ☐ Contractor

☐ Internal

If contractor, please provide name: \_\_\_\_\_

Frequency of Cleaning: ☐ Daily

☐ Weekly

☐ Monthly

☐ Quarterly

☐ Annually

Who purchases janitorial supplies for the facility? \_\_\_\_\_

How do you purchase your cleaning products? ☐ As Needed

☐ Through Procurement Contracts\*

Other (Explain): \_\_\_\_\_

*\*If you purchase through procurement contracts, please answer the following:*

Does your current contract include ECOLOGO products? \_\_\_\_\_

When does your contract expire? \_\_\_\_\_

Purchasing based on: ☐ Cost-in-Use

☐ Jug

5S Program:

☐ Yes

☐ No

Current Cleaning Equipment: \_\_\_\_\_

Is the equipment owned or leased? \_\_\_\_\_

☐ Own

☐ Lease

Age of the equipment: \_\_\_\_\_

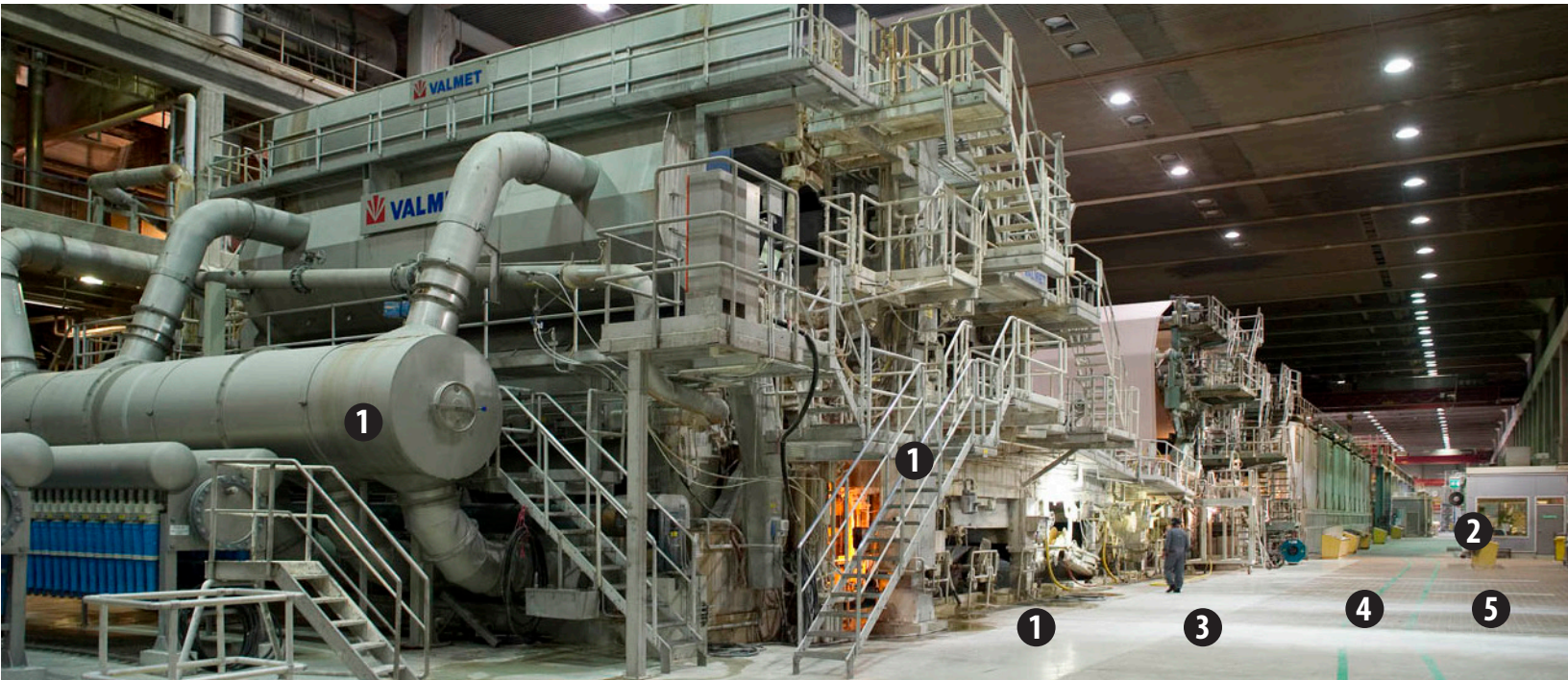


# The Dustbane Way

## Cleaning a Paper Mill



Cleaning a paper mill starts with a simple program. Ask us about a custom program that will meet your individual needs. Here's our baseline recommendation.



1



### Industrial Degreaser: Power Lift

An industrial grade degreaser highly effective to quickly remove grease, oil, dirt and grime. Offers a performance superior to solvent based cleaners while being safe on all metal and non-metal surfaces, including rubber. For a more eco-friendly option, choose Power Lift.

- Dilute in cold water at a rate of 1:60.
- Available in 4 L, 20 L & 210 L.

2



### Hand Cleaner: Ultra Orange

Workers can get their hands dirty with a range of oils, grease and dirt. Ultra Orange is an industrial strength hand cleaner that can tackle any job, offering deep cleaning power while being gentle on the hands.

- Ready-to-use.
- Available in 4 L.

3



### Sweeping Compound

Dustbane Sweeping Compound is used to clean and reduce airborne dust during sweeping and to ease the removal of dust and dirt on sealed and unsealed wood, concrete and metal floors. 100% biodegradable.

- Available in 22 kg, 100 kg & 135 kg.

4



### DB24

An industrial wet/dry vacuum for all your heavy-duty messes. The DB24 is built with a tough tank for aggressive movements and powerful cleanup. Boasts an integrated drainpipe for efficient disposal after use. Made of up to 75% recycled plastic.

- cUL Certified
- Includes all necessary tools & accessories

5



### Gladiator 1050 Ride-On

Cleaning floors in a manufacturing facility with a broom takes forever and just stirs the dust up into the air. The Gladiator 1050 Ride-On can clean carpets and floors quickly without disturbing the peace.

# The Dustbane Way

## Cleaning a Power Plant



Cleaning a power plant starts with a simple program. Ask us about a custom program that will meet your individual needs. Here's our baseline recommendation.



1



### Cleaner & Degreaser: Emerald

Because the machines used in power plants often cause grease to build up on the floors and equipment, the choice of a good degreaser is very important. With its safe yet powerful formula, Emerald effectively cuts through grease, oil and heavily soiled surfaces, while having a reduced environmental impact. UL ECOLOGO® Certified.

- Dilute in cold water at a rate of 1:125 (cleaner)
- Dilute in cold water at a rate of 1:40 (degreaser)
- Available in 750 ml (RTU), 4 L & 20 L.

2



### Glass and Chrome Cleaner: Azure

Maintaining the cleanliness of an industrial facility is very important for productivity and the well being of employees. Keep your windows, mirrors, chrome and stainless steel sparkling clean and streak free. APE, VOC and ammonia free. UL ECOLOGO® Certified.

- Dilute in cold water at a rate of 1:16.
- Available in 750 ml (RTU) & 4 L.

3



### Sweeping Compound

Dustbane Sweeping Compound is used to clean and reduce airborne dust during sweeping and to ease the removal of dust and dirt on sealed and unsealed wood, concrete and metal floors. 100% biodegradable.

- Available in 22 kg, 100 kg & 135 kg.

4



### Floor Sweeping: Gladiator 512

Cleaning floors with a broom in an industrial setting takes a long time and just stirs the dust up into the air. The Gladiator 512 walk behind sweeper can clean carpets and floors quickly and seamlessly without disturbing the peace.

- 28" sweeping path
- 2.5 hours of runtime



# The Dustbane Way

## Cleaning Mining/Oil Sands Sites



Cleaning mining/oil sands sites plant starts with a simple program. Ask us about a custom program that will meet your individual needs. Here's our baseline recommendation.



1



### Industrial Degreaser: Power Lift

An industrial grade degreaser highly effective to quickly remove grease, oil, dirt and grime. Offers a performance superior to solvent based cleaners while being safe on all metal and non-metal surfaces, including rubber. For a more eco-friendly option, choose Power Lift.

- Dilute in cold water at a rate of 1:60.
- Available in 4 L, 20 L & 210 L.

2



### Pressure Wash Concentrate: Power Wash

Power Wash effectively removes road salt, road tar, bugs, bird droppings and acid rain, all elements that can be highly damaging to the equipment's exterior if not washed off. Power Wash does not contain any harsh chemical and its powerful formula enables you to clean with limited brushing. Its high foaming, fast acting formula allows for a prolonged dwell time to loosen dirt, grease and oil and will clean your vehicle in no time. Safe to use on painted surfaces or decals at any strength. It is also an excellent degreaser.

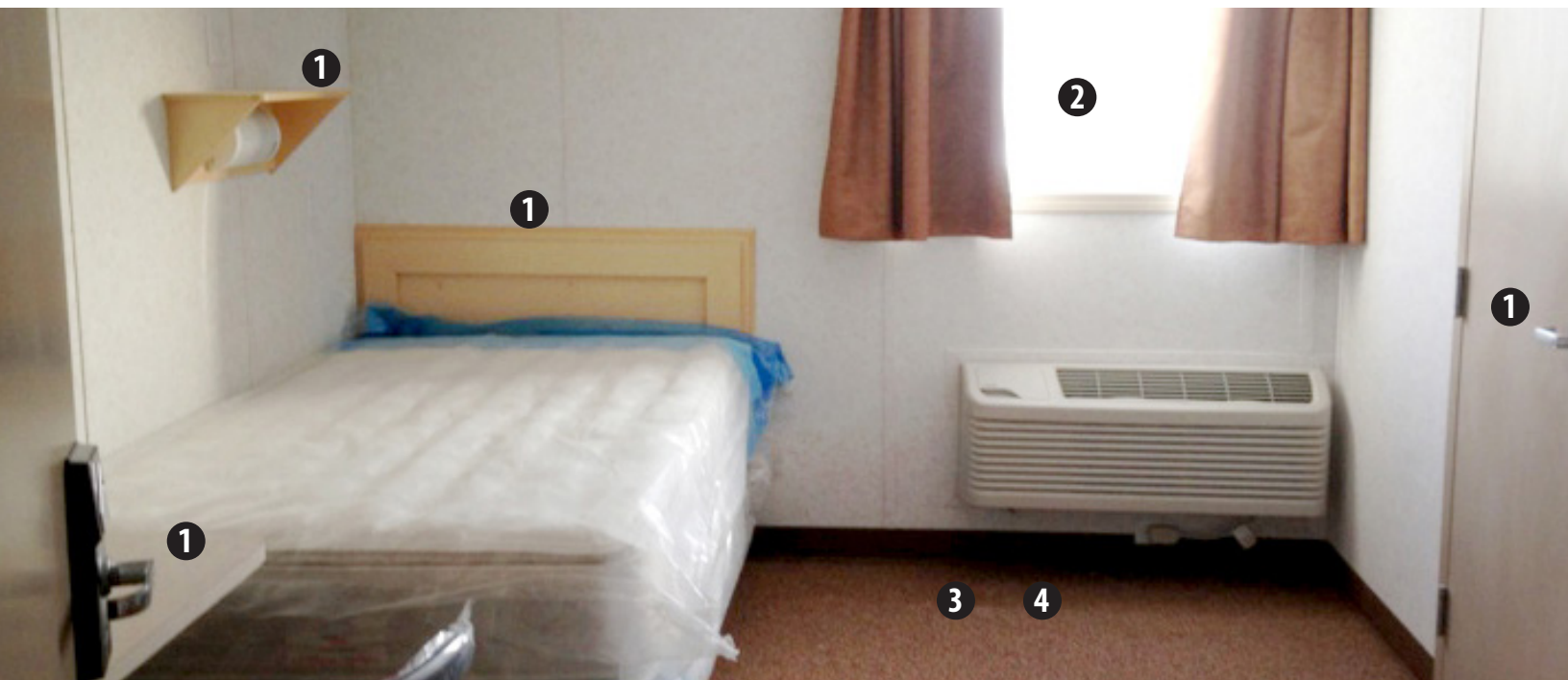
- Dilute in cold water at a rate of 1:60.
- Available in 4 L, 20 L & 210 L.

# The Dustbane Way

## Cleaning a Staff Bedroom



Cleaning a staff bedroom starts with a simple program. Ask us about a custom program that will meet your individual needs. Here's our baseline recommendation.



1



### Disinfectant Cleaner: Quat Plus

Quat Plus kills germs on surfaces and objects and eliminates odours by destroying a wide range of bacteria, fungi and viruses without the harsh smell of chemicals. UL ECOLOGO® Certified. DIN: 02298694.

- Dilute in cold water at a rate of 1:80.
- Available in 4 L.

3



### Carpet Cleaner and Stain Remover: Eco-Expert

Deep cleaning carpets helps to prolong its life since vacuuming alone is not enough to remove dirt and allergens. Removing stains from the carpet will give a more positive impression and provide a more sanitary environment. UL ECOLOGO® Certified.

- Dilute in cold water at a rate of 1:125.
- Available in 4 L & 20 L.

3



### Glass and Chrome Cleaner: Azure

Keep your windows, mirrors, glass, chrome and stainless steel sparkling clean and streak free. APE, VOC and ammonia free. UL ECOLOGO® Certified.

- Dilute in cold water at a rate of 1:16.
- Available in 750 mL (RTU) & 4 L.

4



### Carpet Cleaning: Tracker

An upright vacuum such as the Tracker is highly effective for debris pickup and will help maintain room cleanliness. This model features all metal high-wear components and offers years of worry-free use.

- Clean Air Technology.
- Telescopic Power Wand extends cleaning reach by 32".



# The Dustbane Way

## Cleaning a Washroom



Cleaning a washroom starts with a simple program. Ask us about a custom program that will meet your individual needs. Here's our baseline recommendation.



2



### Hand Washing: Tradition Plus

The emollient containing formula of this foaming hand cleaner leaves hands feeling smooth and soft. UL ECOLOGO® Certified.

- Use with an open top dispenser.
- Reduce soap waste by more than 50%.

5

1

3

4

1

2

2

2

1



### Foaming Cleaner/Disinfectant/Descaler/Deodorizer: Blu-Lite Plus

This surfactant-based cleaner and disinfectant generates a foam that clings to surfaces to give optimum contact time. An effective phosphate and A.P.E. free cleaner that provides a deep cleaning of bathroom surfaces such as toilets, sinks and urinals.

- Dilute in cold water at a rate of 1:40.
- Available in 1 L & 4 L.

3



### Drain Cleaner: Bio-Bac II

Malodours in washrooms are not appealing to patrons. Drains are one hiding place where germs can lurk. Bio-Bac II's enzyme based formula will eat away the odour causing bacteria. UL ECOLOGO® Certified.

- Use concentrated.
- Available in 4 L.

2



### Glass & Stainless Steel Cleaner: Azure

All establishments must maintain cleanliness in order to attract and retain customers. All washroom surfaces must be kept spotless to preserve a clean appearance. UL ECOLOGO® Certified.

- Dilute in cold water at a rate of 1:16.
- Available in 750 ml (RTU) & 4 L.

4



### Odour Control: Air Max

Washrooms can be a source of malodours. The Air Max is designed to offer consistent and powerful odour control for a full 30 days, outperforming gels, wicks and aerosols.

- Available in mango, cotton blossom and cucumber melon.

# The Dustbane Way

## Cleaning a Commercial Kitchen



Cleaning a commercial kitchen starts with a simple program. Ask us about a custom program that will meet your individual needs. Here is our baseline recommendation.



### Stovetop and Grout Cleaner: Polar

A multipurpose cleaner that powerfully removes dirt and stains from a multitude of surfaces. Its non-acidic formula eliminates the risk of damage to sensitive materials. UL ECOLOGO® Certified.

- Available in 1 L & 4 L.

1



### Cleaner/Degreaser: Emerald

Helps to remove stains and other sticky substances that render a dirty look to a kitchen. Emerald's powerful formula effectively cuts through grease, oil and heavily soiled surfaces. UL ECOLOGO® Certified.

- Dilute in cold water at a rate of 1:128.
- Available in 750 ml (RTU), 4 L & 20 L.

4



### Dish Soap: Vayselle

Vayselle's formula is tough on grease and fat and leaves dishes sparkling clean while being mild on hands. UL ECOLOGO® Certified.

- Available in 1L, 4 L & 20 L (RTU).

2



### Fryer and Hot Plate Cleaner: Fryer & Griddle

Ensure your fryers and hot plate are performing at their best. Fryer & Griddle quickly penetrates and emulsifies baked on grease, oil and carbon on metal surfaces.

- Dilute according to application.
- Available in 4 L.

5



### Disinfectant/No Rinse Sanitizer: Quatromyicide V

Quatromyicide V has been formulated to aid in the reduction of cross-contamination on treated surfaces and can also be used as a sanitizer on food contact surfaces

- Dilute in cold water at a rate of 1:160 for disinfection.
- Dilute in cold water at a rate of 1:500 for sanitizing.

3



### Floor Cleaner: Bio-Bac II

Cleans off that tough grease while removing any food smell. Breaks through grease quickly to provide a safe surface. No more slipping on greasy floors. UL ECOLOGO® Certified.

- Dilute in cold water at a rate of 1:20.
- Available in 4 L.

6



### Glass and Chrome Cleaner: Azure

Keep your windows, mirrors, glass, chrome and stainless steel sparkling clean and streak free. APE, VOC and ammonia free. UL ECOLOGO® Certified.

- Dilute in cold water at a rate of 1:16.
- Available in 750 ml (RTU) & 4 L.



# The Dustbane Way

## Cleaning a Cafeteria



Cleaning a cafeteria starts with a simple program. Ask us about a custom program that will meet your individual needs. Here's our baseline recommendation.



1



### Disinfectant Cleaner: Quat Plus

Quat Plus offers the cleaning performance of a neutral quat that eliminates foul odours by destroying a wide range of bacteria, fungi and viruses without the harsh smell of chemicals. UL ECOLOGO® Certified. DIN 02298694.

- Dilute in cold water at a rate of 1:80.
- Available in 4 L.

4



### Multi-Purpose Cleaner: Excelsior

Reduce the amount of products required to clean your cafeteria. The use of Excelsior as a general purpose hard surface cleaner will minimize your chemical inventory while providing the cleaning results you strive for. UL ECOLOGO® Certified.

- Dilute in cold water at a rate of 1:64.
- Available in 4 L & 20 L.

2



### Glass and Chrome Cleaner: Azure

Clean windows make a good first impression and set the tone for the rest of the facility. Keep your windows, mirrors, chrome and stainless steel sparkling clean and streak free. APE, VOC and ammonia free. UL ECOLOGO® Certified.

- Dilute in cold water at a rate of 1:16.
- Available in 750 ml (RTU) & 4 L.

5



### Floor Care System

Get safe and outstanding looking floors with this trio. Strip with Time-Out Plus, seal using Accolade and complete the process by using Gran-Prix XL as a floor finish.

3



### Disinfecting Wipes: Triple Action Multi

If you've eaten in a cafeteria, you know how quickly tables can get dirty. Triple Action wipes make it easy to clean tables regularly and prevent a dirty appearance, therefore maintaining sanitary standards.

DIN: 02452723.

- Ready-to-use.
- 7" x 8" (120 wipes per container).

6



### Hurricane Maxi

Walk behind scrubber perfect for sweeping and cleaning cafeteria floors and promoting a healthy environment. Cost-saving alternative to a mop and bucket.

- 18" scrubbing pad.
- Height-adjustable handle.

# The Dustbane Way

## Cleaning a Fitness Centre



Cleaning a fitness centre starts with a simple program. Ask us about a custom program that will meet your individual needs. Here's our baseline recommendation.



1



### Neutral Detergent: Film Away

A neutral detergent that works on both floors and carpets to remove residue left behind from floor strippers, ice melter and hard water build-up to extend the life of your flooring. Film Away's neutral pH formula is an excellent multitask cleaner that offers superior cleaning power. UL ECOLOGO® Certified.

- Dilute in cold water at a rate of 1:80.
- Available in 4 L.

2



### Disinfecting Wipes: Eliminate

Fitness centers can be a dirty place. This area, where many people are sweating on equipment, creates an environment that may as well be a playground for bacteria, viruses and other troublemakers. Having readily available disinfecting wipes to wipe down the equipment after each use will encourage patrons to clean the equipment and maintain the sanitary standards of your facilities. DIN: 02459507.

- Ready-to-use.
- 6"x 7" wipes (180 wipes per container).

3



### Disinfectant: UniTab

UniTab is a bleach alternative that offers fitness centres a quick means of sanitizing or disinfecting without leaving behind harsh fumes. UniTab also works as an excellent deodorizer that can combat odours. DIN: 02470381.

- Dilute 2 tablets per 1 L of water for disinfection.
- Dilute 1 tablet per 20 L of water for sanitizing.



# The Dustbane Way

## Cleaning an Entertainment Room



Cleaning an entertainment room starts with a simple program. Ask us about a custom program that will meet your individual needs. Here's our baseline recommendation.



1



### Multi-Purpose Cleaner: Excelsior

The entertainment room often finds itself dirty with food residues and grease stains from popcorn and snacks. A quick wipe with Excelsior can easily keep this room clean and sanitary, making it more enjoyable for everyone and improve the well-being of employees. UL ECOLOGO® Certified.

- Dilute in cold water at a rate of 1:64.
- Available in 4 L & 20 L.

2



### Carpet Cleaner and Stain Remover: Eco-Expert

Deep cleaning carpets helps to prolong its life since vacuuming alone is not enough to remove dirt and allergens. Removing stains from the carpet will give a more positive impression to your guests and provide a more sanitary environment. UL ECOLOGO® Certified.

- Dilute in cold water at a rate of 1:80.
- Available in 4 L & 20 L.

3



### DB3

Extremely compact and easy to use, it offers excellent ergonomics thanks to the convenient handle that includes an integrated cable reel and silent wheels. Made of up to 75% recycled plastic.

- cUL Certified
- Includes all necessary tools & accessories

4



### Floor Cleaning: Tracker

An upright vacuum such as the Tracker is highly effective for debris pickup and will help maintain room cleanliness. This model features all metal high-wear components and offers years of worry-free use.

- Clean Air Technology.
- Telescopic Power Wand extends cleaning reach by 32".

# The Dustbane Way

## Cleaning an Office Cubicle



Cleaning an office cubicle starts with a simple program. Ask us about a custom program that will meet your individual needs. Here's our baseline recommendation.



2



### Multi-Purpose Cleaner: Excelsior

The use of Excelsior as a general purpose hard surface cleaner will help prevent the spread of germs while minimizing your chemical inventory and providing the cleaning results you strive for. UL ECOLOGO® Certified.

- Dilute in cold water at a rate of 1:64.
- Available in 4 L & 20 L.

2



### Spot and Stain Remover: Eco-Expert

Spills, coffee, crumbs, dirt and other debris end up in places you least expect, like your office chair. You don't need a harsh chemical to remove stains and spots from the chair; a small amount of Eco-Expert will get the job done. UL ECOLOGO® Certified.

- Dilute in cold water at a rate of 1:125.
- Available in 4 L & 20 L.

3



### Carpet Cleaning: 1200 XT Box Extractor

Deep clean stains and odours in carpeting with the 1200 XT Box Extractor. Maintaining a clean carpet will extend its life while improving the quality of the air in the office and promoting a healthier environment.

4



### Carpet Cleaning: Tracker

Keep your office carpets free of dirt and debris for years to come with the Tracker vacuum.

- 1 gallon upright vacuum
- HEPA Media vacuum bag for advanced filtration and easy dirt disposal

5



### Cleaning Wipes: Triple Action Multi

Computers, desks, keyboards and phones are just some of the high-touch areas in a cubicle. Triple Action Multi is a great option for combatting bacteria and viruses in open spaces.

- Ready-to-use.
- 7" x 8" wipes (120 wipes per container)



# The Dustbane Way

## Cleaning a Laundry Room



Cleaning a laundry room starts with a simple program. Ask us about a custom program that will meet your individual needs. Here's our baseline recommendation.



1



### Multi-Purpose Cleaner: Excelsior

Reduce the amount of products required to clean your laundry room. The use of Excelsior as a general purpose hard surface cleaner will minimize your chemical inventory while providing the cleaning results you strive for. UL ECOLOGO® Certified.

- Dilute in cold water at a rate of 1:64.
- Available in 4 L & 20 L.

4



### Stain Remover: Oxy D.S.T. RTU

Oxy D.S.T. is a multi-purpose cleaner that removes tough stains in a safe and efficient matter. This peroxide based cleaner works great as a surface cleaner and stain remover for clothing and carpets. UL ECOLOGO® Certified.

- Available in wipes, 750 ml (RTU) & 4 L.

2



### Hand Soap: Tradition Plus

Washing your hands on a regular basis is essential in reducing the spread of common illnesses. Use with the open top dispenser to reduce the amount of soap dispensed by more than 50%. UL ECOLOGO® Certified.

- Available in 4 L.

5



### Floor Cleaning: Micro-5

Our lightweight, easy to maneuver Micro-5 will wash your floors in difficult to reach areas while enhancing productivity in small spaces.

- Height-adjustable handle
- 11" scrubbing path

3



### Disinfectant: UniTab

UniTab is proven effective against a number of different microorganisms that can result in mold spores in damp environments. This compact tablet is perfect in areas that require intense disinfection against bacterial growth. DIN: 02470381.

- Dilute 2 tablets per 1 L of water for disinfection.
- Dilute 1 tablet per 20 L of water for sanitizing.

# The Dustbane Way

## Cleaning a Janitor Closet



Cleaning a janitor closet starts with a simple program. Ask us about a custom program that will meet your individual needs. Here's our baseline recommendation.



1



### Proportioning System: EnviroFlex

The EnviroFlex Proportioner is easy to use and can be installed in just a few minutes. It consistently dispenses the precise amount of chemicals regardless of water pressure. The system can be configured with 2 (1 GPM) + 2 (3.5 GPM) or 3 (1 GPM) + 1 (3.5 GPM), allowing for product and application flexibility to customize the system to your needs.

2



### Easy Filling and Pouring: Buddy Jug

This commercial-grade 20 L jug is user-friendly for easy filling and pouring of diluted chemicals into spray bottles. The jug is translucent so you can quickly see what's inside. It is ideal for storing liquids on a shelf.

3



### Dispensing System: ModularFlex

Proper cleaning starts with proper dilution. Up to 4 chemicals can be housed within the unit. It accommodates 2 liter bottles. Your chemicals are stored behind locked enclosures to protect both the users and your brand. It allows for safe manipulation of the chemicals by preventing any leaks or direct contact.

4



### Portable System: RiteFlex

No wall space available? The RiteFlex offers a portable means of accurately diluting concentrated cleaning products to fill mop buckets, sinks, auto-scrubbers, tanks and other containers.



[illegible]



# Vision

To be a growth company focused on continuously improving customer experience through people, products and processes while making a positive impact on society and the environment.



## **CUSTOMER INTIMATE**

Meet customer expectations.



## **EXECUTE**

Deliver results.



## **GROWTH**

Be a high growth company where staff also grow professionally.



## **RESPECTFUL & INCLUSIVE**

Show all stakeholders respect.  
Communicate effectively and listen to learn from others.



## **MEANING**

Positively impact people and the planet.