

ModularFlex Program

Chemical Series & Dispensing System



MADE IN CANADA



Eligible products

COMPACT CLEANING
SOLUTION

SUSTAINABILITY

COST SAVINGS

ModularFlex Series

What are they all about?

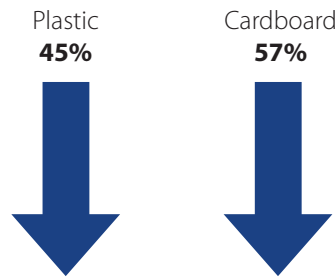
Safer for your employees and ours

The health and safety of our employees, your employees and the general public is a big concern for Dustbane. This system was developed with them in mind, while keeping our goal to protect the environment. Combined with the new ModularFlex System, these products offer versatile chemical dispensing, as well as reduce the cleaning footprint.

Reduced environmental footprint

Significant benefits emerge when using the ModularFlex Series. These products provide excellent performance while covering all cleaning needs. As water is only added at the moment of use, the amount of product shipped and handled is greatly reduced. The use of concentrated products greatly reduces cardboard and plastic waste.

The annual reduction for cardboard and plastic is estimated to be approximately 57% and 45% respectively.



These products are extremely versatile and will allow you to meet all your cleaning needs, in a safe, economical way. The benefits are endless:

- Closed-loop system eliminates exposure to chemical
- Secures chemical in containers for safer shipping
- Prevents spill, leak and chemical loss
- Reduces space
- Reduces waste
- Quick and easy to use
- Pay for chemical – not water
- Versatile system
- Very low cost in use
- Kosher Certified

Buy 1 | We Plant 1

Made in Canada. Restoring Canadian waters.



Every product in the ModularFlex line supports verified kelp restoration efforts along the coast of British Columbia. Together, we're helping rebuild marine ecosystems and support Indigenous-led restoration in the communities that call these waters home.



9 products to cover all your cleaning needs

Dustbane's reformulated ModularFlex Series was designed to address all your cleaning needs. We now offer 6 highly versatile products, that will reduce your cleaning footprint. Our customers usually look for simple, efficient, economical and environmentally conscious products, the perfect description of the ModularFlex Series. The possibilities for these products are practically limitless, making them the ideal choice.

M1

Restroom Cleaner

Emulsifying Cleaner



Benefits:

- Suitable for toilet bowls, urinals and porcelain
- Removes encrustations, scale and stains
- Keeps toilets bright, clean and smelling fresh
- Foaming formula clings on surfaces to give optimum contact time and ultimately a deeper clean
- Safe for septic systems
- Very low cost in use

Eco Easy Fill:



Black (Code: 51072)
Dilution Rate 1:20

Dilutions:

ECOLOGO (toilet bowls & urinals)	1:5
Normal cleaning (restroom)	1:20
Light cleaning	1:40

Code: 50980 (2 L)

M6

Oxy-Q

Hydrogen Peroxide Based Disinfectant



Benefits:

DIN: 02464314

- Over 500 applications
- 97% of cleaning needs addressed in one bottle
- Non-toxic and safer than chlorine bleach
- Cleans, degreases, deodorizes and disinfects
- Suitable for all washable surfaces
- Floor-to-ceiling cleaning solution
- Very low cost in use

Eco Easy Fill:



Yellow (Code: 51091)
Dilution Rate 1:40

Dilutions:

Disinfection	1:40
ECOLOGO (UL 2794)	1:160
Hard surface cleaner	1:160
Floor and carpet cleaner	1:256
Glass cleaner	1:256

Code: 50982 (2 L)

M7

Neutral Cleaner

Neutral Detergent & Ice Melt Remover



Benefits:

- Suitable for most surfaces
- Reduces slip and fall accidents by eliminating ice melt residue that attracts water
- Helps maintain the pristine appearance of floors
- Removes damaging ice melt residue
- Neutralize alkaline residue for flawless floor finish application
- Very low cost in use

Eco Easy Fill:



Grey (Code: 51069)
Dilution Rate 1:256

Dilutions:

Heavy duty cleaning	1:80
Hard surface cleaner	1:160
Floors and carpet cleaner	1:160
Light cleaning	1:256
ECOLOGO (UL 2759)	1:256

Code: 50984 (2 L)

M8

Glass Cleaner

Surface & Glass Cleaner



Benefits:

- Suitable for mirrors, glass, porcelain, counters and stainless steel
- Removes marks, stains, atmospheric grime and smoke haze
- Fast drying and non streaking
- Good for sensitive surface cleaning
- No ammonia
- Very low cost in use

Eco Easy Fill:



Blue (Code: 51092)
Dilution Rate 1:80

Dilutions:

ECOLOGO, heavy duty cleaning	1:32
Normal cleaning	1:80
Light cleaning	1:160

Code: 50986 (2 L)

M9

Bio-Enzyme Cleaner

Bio-Based Cleaner, Degreaser and Deodorizer



Benefits:

- Cleans, degreases and deodorizes
- Sustainable solution, fully biodegradable
- Breaks down matter and grease
- Safely cleans clogged drains
- Deodorizes by attacking the organic source of odours
- Controls odours in dumpsters and garbage pails

Eco Easy Fill:



Grey (Code: 51069)
Dilution Rate 1:256

Dilutions:

Odour control/Urine	1:160
Carpet cleaner	1:160
Degreaser	1:160
Washroom cleaner	1:160
Floor cleaner	1:256
Glass cleaner	1:500
Hard surface cleaner	1:500

Code: 50987 (2 L)

M10

Odour Control

Malodour Counteractant & Encapsulator



Benefits:

- Suitable to eliminate chemical smells commonly found in cleaning solutions
- Can be used as an air freshener or an additive to your cleaning solution
- Utilizes premium natural fragrance oils
- Very low cost in use

Eco Easy Fill:



Black (Code: 51072)
Dilution Rate 1:20

Dilutions:

Smoke & strong odour encapsulation	1:10
Fabric & soft surfaces odour encapsulation	1:20
General deodorizer	1:80
Carpet & fabric freshener	1:120

Code: 50988 (2 L)

M11

Degreaser

Hard Surface Cleaner & Degreaser



Benefits:

- Cuts through grease, oil, and heavy soiled surfaces
- Suitable for the food service and industrial settings
- Solvent free, caustic free
- Very low cost in use

Eco Easy Fill:



Green (Code: 51093)
Dilution Rate 1:120

Dilutions:

Heavy duty cleaning	1:40
ECOLOGO, Normal cleaning	1:160
Light cleaning	1:256

Code: 50990 (2 L)

M12

SC Floor Stripper

Floor Stripper

COMING SOON

Quat
V

Quatromyicide V

DIN: 02507064

Disinfectant, No Rinse Sanitizer, and Deodorizer



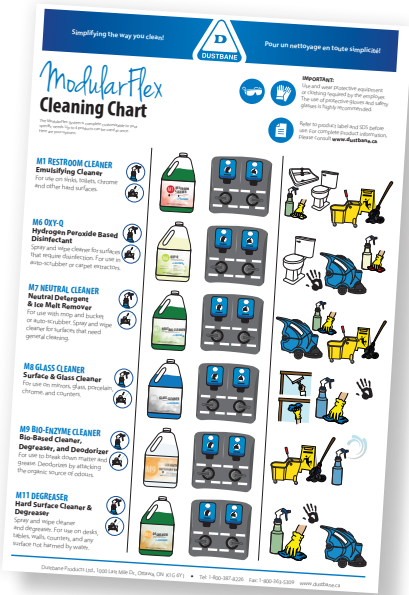
Benefits:

- Disinfects, sanitizes, and deodorizes
- Great solution for multi-touch surfaces responsible for cross-contamination
- No rinse food contact sanitizer when used at 200 ppm
- Offers a broad-spectrum disinfection in 10 minutes
- Offers a broad-spectrum sanitizing in 1 minute
- Concentrated for ultimate control and versatility
- Leaves no active ingredient residual
- Inhibits growth of mold and mildew
- Safe for all washable surfaces
- Safe for food contact surfaces

Dilutions:

Disinfectant	1:160
Sanitizer	1:500

Code: 50981 (2 L)



Custom Designed Wall Chart

Wall Chart

Comes with a waterproof wall chart that explains the four dilution rates of chemicals installed in the system. The charts makes it easy for different users to benefit from the system.

Cost Savings

How to calculate the cost in use?

Comparing the litre's prices is not a good indication of the final price paid when purchasing a product. The formula to obtain the cost in use is as follows:

(Price / Litre) / Total Parts From Dilution = Cost in Use

Here's an example:

Dilution	Price	Format
1:80	\$35.00	2 L

$$\$35.00 / 2 \text{ L} = \$0.22$$

ModularFlex System

4 Products, Countless Opportunities!

Proper cleaning starts with proper dilution. Up to 4 chemicals can be housed within the unit. It accommodates 2 liter bottles. Your chemicals are stored behind locked enclosures to protect both the users and your brand. It allows for safe manipulation of the chemicals by preventing any leaks or direct contact.



E-Gap & AirGap

Two types of eductors. E-Gap provides backflow protection through use of an elastomeric sleeve & AirGap uses a one-inch gap of air between the water source and the chemical inlet to provide backflow protection

Cost Effective

Dilution control is the best form of cost-effective use of chemical concentrates. Diluting your own chemical is less costly than buying ready-to-use products.

Accuracy Matters

Patented Pressure Regulation Technology comes standard with the ModularFlex System. This technology eliminates dilution variance to consistently dispense the precise amount of chemicals regardless of water pressure.

Set a New Standard

The all-in-one system has the quickest installation and setup time in the industry. It has an intuitive, user friendly design that users will appreciate.

- Rite-Connect closed-loop system compatible
- 1 - 3.5 GPM flow rate options
- Uses less space than dispenser + separate chemicals
- High-quality dispenser stands up to daily wear and tear
- Cabinets with steel locking device

Codes: E-GAP - HSP9184

AIRGAP - HSP3578AG

Eco Easy Fill

Portable proportioning unit



Simply connect it to a water source and watch the Eco Easy Fill dilute and dispense on the go. With a number of different dilution rates available, this unit can take care of almost all your dilution needs without a heavy-duty wall-mounted system.

- Includes a convenient bucket clip to remove any back strain on the operator
- Colour-coded unit for clear identification of dilution rate
- Closed-loop system for spill-proof use

DILUTION RATIO	COLOUR	CODE	COMPATIBILITY
1:256	GREY	51069	M7, M9
1:120	GREEN	51093	M11
1:80	BLUE	51092	M8
1:40	YELLOW	51091	M6
1:20	BLACK	51072	M1, M10
1:10	WHITE	51070	

Satellite Sprayers

Proportioning system

Foamer

The Satellite Foamer Sprayer transcends expectations by seamlessly blending the economy and adaptability of the Satellite series with the convenience of a multifunctional system. This innovative device is designed for versatile applications, including foaming, spraying, and rinsing, providing a comprehensive solution for all your cleaning needs.

Code: H5824





Vision

To be a growth company focused on continuously improving customer experience through people, products and processes while making a positive impact on society and the environment.



CUSTOMER INTIMATE

Meet customer expectations.



EXECUTE

Deliver results.



GROWTH

Be a high growth company where staff also grow professionally.



RESPECTFUL & INCLUSIVE

Show all stakeholders respect.
Communicate effectively and listen to learn from others.



MEANING

Positively impact people and the planet.