

# ModularFlex Program

## Chemical Series & Dispensing System



Eligible products



COMPACT CLEANING  
SOLUTION

SUSTAINABILITY

COST SAVINGS

# ModularFlex Series

## What are they all about?

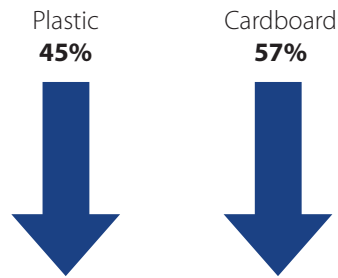
### Safer for your employees and ours

The health and safety of our employees, your employees and the general public is a big concern for Dustbane. This system was developed with them in mind, while keeping our goal to protect the environment. Combined with the new ModularFlex System, these products offer versatile chemical dispensing, as well as reduce the cleaning footprint.

### Reduced environmental footprint

Significant benefits emerge when using the ModularFlex Series. These products provide excellent performance while covering all cleaning needs. As water is only added at the moment of use, the amount of product shipped and handled is greatly reduced. The use of concentrated products greatly reduces cardboard and plastic waste.

The annual reduction for cardboard and plastic is estimated to be approximately 57% and 45% respectively.



These products are extremely versatile and will allow you to meet all your cleaning needs, in a safe, economical way. The benefits are endless:

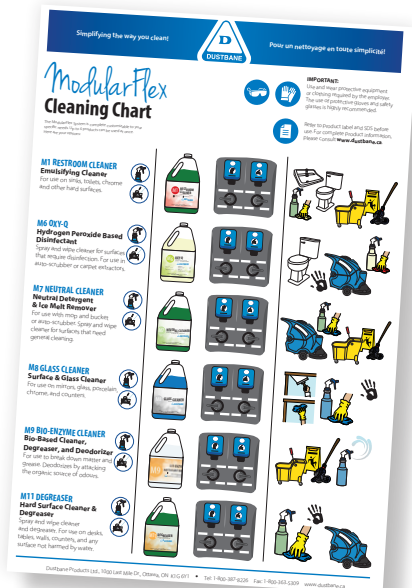
- Closed-loop system eliminates exposure to chemical
- Secures chemical in containers for safer shipping
- Prevents spill, leak and chemical loss
- Reduces space
- Reduces waste
- Quick and easy to use
- Pay for chemical – not water
- Versatile system
- Very low cost in use
- Kosher Certified



### Wall Chart

Comes with a waterproof wall chart that explains the four dilution rates of chemicals installed in the system. The charts makes it easy for different users to benefit from the system.

Custom Designed Wall Chart



# 9 products to cover all your cleaning needs

Dustbane's reformulated ModularFlex Series was designed to address all your cleaning needs. We now offer 6 highly versatile products, that will reduce your cleaning footprint. Our customers usually look for simple, efficient, economical and environmentally conscious products, the perfect description of the ModularFlex Series. The possibilities for these products are practically limitless, making them the ideal choice.



## Restroom Cleaner

Emulsifying Cleaner



### Benefits:

- Suitable for toilet bowls, urinals and porcelain
- Removes encrustations, scale and stains
- Keeps toilets bright, clean and smelling fresh
- Foaming formula clings on surfaces to give optimum contact time and ultimately a deeper clean
- Safe for septic systems
- Very low cost in use

### Eco Easy Fill:



White (Code: 51070)  
Dilution Rate 1:10

### Dilutions:

ECOLOGO (UL 2759)	1:5
Bowl & urinal cleaner	1:5
Restroom cleaning	1:16
Light cleaning	1:32

**Code:** 50980 (2 L)



## Oxy-Q

Hydrogen Peroxide Based Disinfectant



### Benefits:

DIN: 02464314

- Over 500 applications
- 97% of cleaning needs addressed in one bottle
- Non-toxic and safer than chlorine bleach
- Cleans, degreases, deodorizes and disinfects
- Suitable for all washable surfaces
- Floor-to-ceiling cleaning solution
- Very low cost in use

### Eco Easy Fill:



Yellow (Code: 51091)  
Dilution Rate 1:40

### Dilutions:

Disinfection	1:40
ECOLOGO (UL 2794)	1:160
Hard surface cleaner	1:160
Floor and carpet cleaner	1:256
Glass cleaner	1:256

**Code:** 50982 (2 L)



## Neutral Cleaner

Neutral Detergent & Ice Melt Remover



### Benefits:

- Suitable for most surfaces
- Reduces slip and fall accidents by eliminating ice melt residue that attracts water
- Helps maintain the pristine appearance of floors
- Removes damaging ice melt residue
- Neutralize alkaline residue for flawless floor finish application
- Very low cost in use

### Eco Easy Fill:



Green (Code: 51093)  
Dilution Rate 1:120

### Dilutions:

ECOLOGO (UL 2759)	1:160
Light cleaning	1:256
Normal cleaning	1:160
Heavy duty	1:80
Auto-scrubber	1:500

**Code:** 50984 (2 L)

M8

## Glass Cleaner

Surface & Glass Cleaner



### Benefits:

- Suitable for mirrors, glass, porcelain, counters and stainless steel
- Removes marks, stains, atmospheric grime and smoke haze
- Fast drying and non streaking
- Good for sensitive surface cleaning
- No ammonia
- Very low cost in use

### Eco Easy Fill:



Yellow (Code: 51091)  
Dilution Rate 1:40

### Dilutions:

ECOLOGO (UL 2759)	1:30
Light cleaning	1:160
Normal cleaning	1:80

**Code:** 50986 (2 L)

M9

## Bio-Enzyme Cleaner

Bio-Based Cleaner, Degreaser and Deodorizer



### Benefits:

- Cleans, degreases and deodorizes
- Sustainable solution, fully biodegradable
- Breaks down matter and grease
- Safely cleans clogged drains
- Deodorizes by attacking the organic source of odours
- Controls odours in dumpsters and garbage pails

### Eco Easy Fill:



Grey (Code: 51069)  
Dilution Rate 1:256

### Dilutions:

Odour Control	1:40
ECOLOGO (UL 2792)	1:256
Light soil	1:160
Medium soil	1:80
Heavy soil	1:40
Carpet spotter	1:160
Parts cleaning	1:80 - 1:160

**Code:** 50987 (2 L)

M10

## Odour Control

Malodour Counteractant



### Benefits:

- Suitable to eliminate chemical smells commonly found in cleaning solutions
- Can be used as an air freshener or an additive to your cleaning solution
- Utilizes premium natural fragrance oils
- Very low cost in use

### Eco Easy Fill:



Green (Code: 51093)  
Dilution Rate 1:120

### Dilutions:

Light cleaning	1:256
Normal cleaning	1:160
Heavy duty	1:80
Auto-scrubber	1:500

**Code:** 50984 (2 L)



## Degreaser

Hard Surface Cleaner & Degreaser



### Benefits:

- Cuts through grease, oil, and heavy soiled surfaces
- Suitable for the food service and industrial settings
- Solvent free, caustic free
- Very low cost in use

### Eco Easy Fill:



Green (Code: 51093)  
Dilution Rate 1:120

### Dilutions:

ECOLOGO (UL 2759)	1:160
Heavy duty cleaning	1:80
Auto-scrubber	1:256

**Code:** 50990 (2 L)



## Floor Stripper

Floor Stripper

**PRODUCT IMAGE  
COMING SOON**

### Benefits:

- Highly effective without harsh chemicals
- Fast acting – requires minimum effort
- Safe for cleaning equipment
- Safe for all types of flooring
- Caustic-free
- Ammonia-free
- Biodegradable
- Reduced environmental impact

### Eco Easy Fill:



Blue (Code: 51092)  
Dilution Rate 1:80

### Dilutions:

Heavy Duty Stripping	1:40
Normal Stripping	1:80

**Code:** 50991 (2 L)



## Quatromyicide V

DIN: 02507064

Disinfectant, No Rinse Sanitizer, and Deodorizer

**PRODUCT IMAGE  
COMING SOON**

### Benefits:

- Disinfects, sanitizes, and deodorizes
- Great solution for multi-touch surfaces responsible for cross-contamination
- No rinse food contact sanitizer when used at 200 ppm
- Offers a broad-spectrum disinfection in 10 minutes
- Offers a broad-spectrum sanitizing in 1 minute
- Concentrated for ultimate control and versatility
- Leaves no active ingredient residual
- Inhibits growth of mold and mildew
- Safe for all washable surfaces
- Safe for food contact surfaces

### Dilutions:

Disinfectant	1:160
Sanitizer	1:500

**Code:** 50981 (2 L)



# Cost Savings

## How to calculate the cost in use?

Comparing the liter's prices is not a good indication of the final price paid when purchasing a product. The formula to obtain the cost in use is as follows:

$$(\text{Price} / \text{Litre}) / \text{Total Parts From Dilution} = \text{Cost in Use}$$

Here's an example:

Dilution	Price	Format
1:80	\$35.00	2 L

$$\$35.00 / 2 \text{ L} = \$0.22$$

## ModularFlex System

### 4 Products, Countless Opportunities!

Proper cleaning starts with proper dilution. Up to 4 chemicals can be housed within the unit. It accommodates 2 liter bottles. Your chemicals are stored behind locked enclosures to protect both the users and your brand. It allows for safe manipulation of the chemicals by preventing any leaks or direct contact.



#### E-Gap & AirGap

Two type of educutors. E-Gap provides backflow protection through use of an elastomeric sleeve & AirGap uses a one-inch gap of air between the water source and the chemical inlet to provide backflow protection

#### Cost Effective

Dilution control is the best form of cost-effective use of chemical concentrates. Diluting your own chemical is less costly than buying ready-to-use products.

#### Accuracy Matters

Patented Pressure Regulation Technology comes standard with the ModularFlex System. This technology eliminates dilution variance to consistently dispense the precise amount of chemicals regardless of water pressure.

#### Set a New Standard

The all-in-one system has the quickest installation and setup time in the industry. It has an intuitive, user friendly design that users will appreciate.

- Rite-Connect closed-loop system compatible
- 1 - 3.5 GPM flow rate options
- Uses less space than dispenser + separate chemicals
- High-quality dispenser stands up to daily wear and tear
- Cabinets with steel locking device

**Codes:** E-GAP - HSP9184

AIRGAP - HSP3578AG

# Eco Easy Fill

*Portable proportioning unit*



Simply connect it to a water source and watch the Eco Easy Fill dilute and dispense on the go. With a number of different dilution rates available, this unit can take care of almost all your dilution needs without a heavy-duty wall-mounted system.

- Includes a convenient bucket clip to remove any back strain on the operator
- Colour-coded unit for clear identification of dilution rate
- Closed-loop system for spill-proof use

DILUTION RATIO	COLOUR	CODE	COMPATIBILITY
1:256	GREY	51069	M9
1:120	GREEN	51093	M7, M10, M11
1:80	BLUE	51092	M12
1:40	YELLOW	51091	M6, M8
1:20	BLACK	51072	
1:10	WHITE	51070	M1

# Satellite Sprayers

*Proportioning system*

## Foamer

The Satellite Foamer Sprayer transcends expectations by seamlessly blending the economy and adaptability of the Satellite series with the convenience of a multifunctional system. This innovative device is designed for versatile applications, including foaming, spraying, and rinsing, providing a comprehensive solution for all your cleaning needs.

**Code:** H5824





## Vision

To be a growth company focused on continuously improving customer experience through people, products and processes while making a positive impact on society and the environment.



### **CUSTOMER INTIMATE**

Meet customer expectations.



### **EXECUTE**

Deliver results.



### **GROWTH**

Be a high growth company where staff also grow professionally.



### **RESPECTFUL & INCLUSIVE**

Show all stakeholders respect.  
Communicate effectively and listen to learn from others.



### **MEANING**

Positively impact people and the planet.