

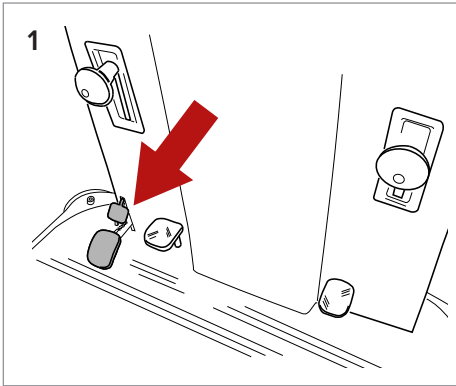


Gladiator 1280

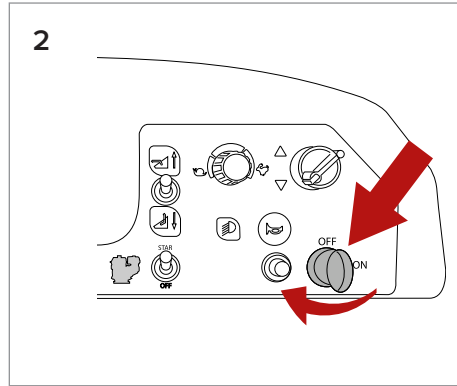
Quick Guide

This guide is intended for quick consultation only and does not replace the user and maintenance manual. Before using this machine, read the user maintenance manual contained in the machine's packaging and follow all the instructions.

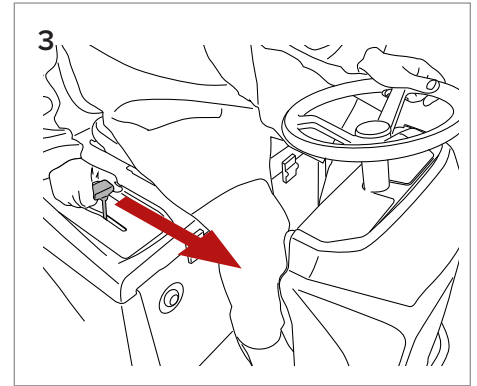
PREPARATION AND OPERATION



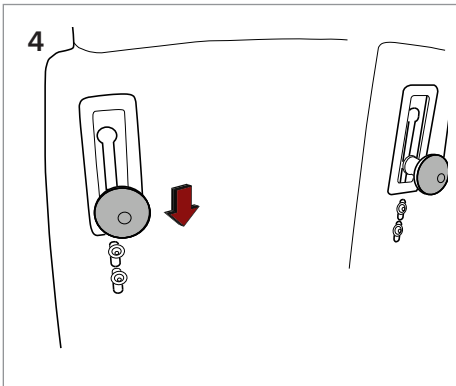
1 Disengage parking brake by pressing on the brake pedal.



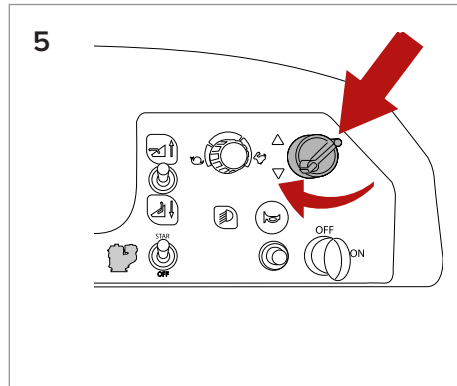
2 Power on.



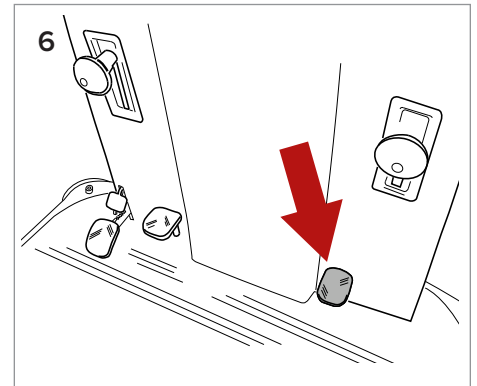
3 Push lever forward to lower main brush.



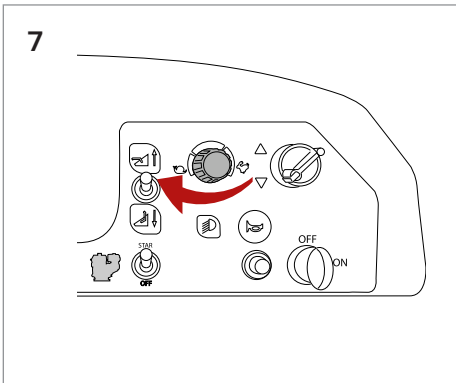
4 Pull and push down lever to lower side brushes.



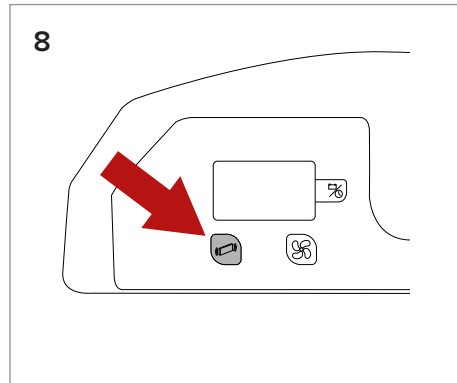
5 Toggle switch to change drive direction to Forward or Reverse.



6 Press accelerator pedal to activate drive.

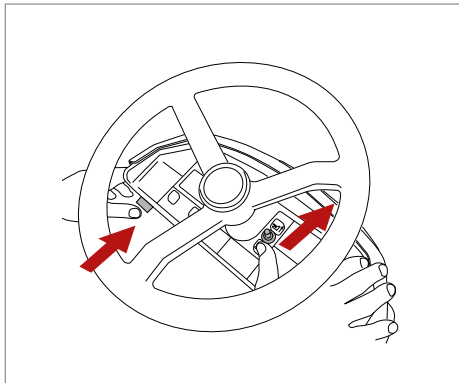


7 Turn to adjust travel speed.



8 Press and hold for +3 sec. to manually activate filter shaker.

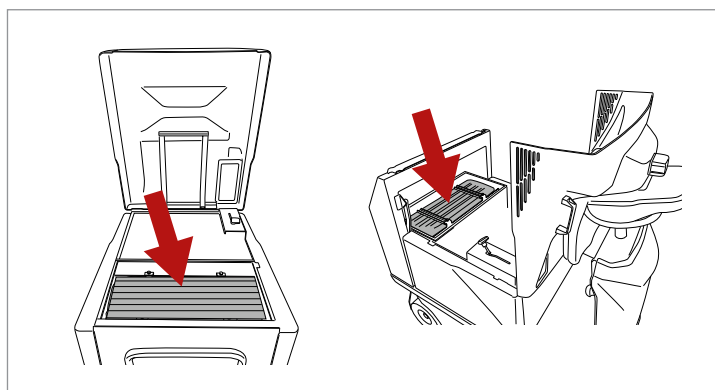
DAILY MAINTENANCE



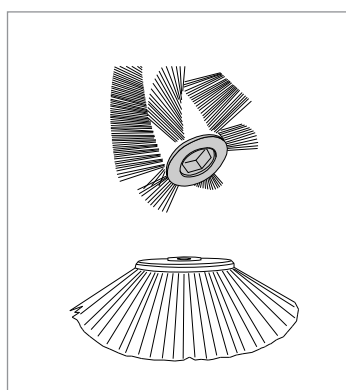
Press switch to lift tray.



Pull lever to tip tray and empty.



Make sure the suction filter is tight and clean.



Check and remove any debris wrapped around the side brushes and on the central brush.

TO CHARGE BATTERIES

1. Disconnect battery pack from the machine.
2. Connect battery pack to the charger.
3. Plug in charger to power outlet.

NOTE: Never stop charge until cycle is complete (green light).

